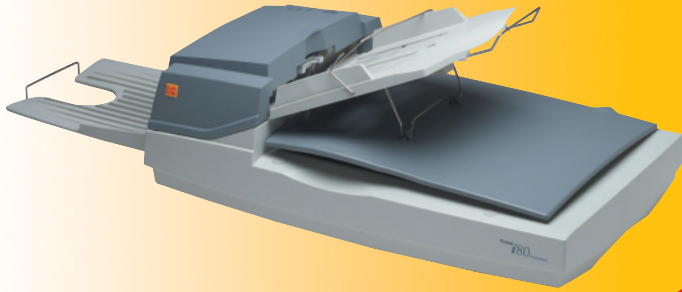


Kodak

i80 Scanner



A fresh face
with a
fast pace.



New i80 Scanner

- Fast duplex scanning
- Choice of light and dark imaging backgrounds
- Autocrop and deskew* (dark backgrounds)

A new direction for centralised or decentralised document management systems. Are you looking for the ideal document scanner for your busy office? Look no further than the KODAK i80 Scanner. The i80 scanner fits single-user installations, as well as large, organization-wide network applications.

FAST SIMPLEX AND DUPLEX SCANNING.

A unique feature is the new Duplex CCD that allows scanning of both document sides in one path. Scanning speed is up to 35 sheets per minute in simplex or 70 images per minute in duplex. The i80 captures a variety of documents including invoices, contracts, letters, notes and more.

The Automatic Document Feeder (ADF), with a 75-sheet capacity, lets you scan a wide range of documents. For magazines and books, simply use the integrated flatbed.

ESSENTIAL FUNCTIONS FOR PROFESSIONALS.

Bundled KODAK Capture Software, Lite lets you select a black or white background, which enables these productivity functions:

- Deskew*: Aligns scanned images according to the paper orientation for better readability.
- Cropping*: Small or mixed image sizes are cut to actual dimensions, optimising file size.

The i80 Scanner's up to 600 dpi optical resolution provides excellent image quality for all types of documents: bitonal, grayscale and colour. You can scan pictures for presentations, Web publishing and more.

SPACE-SAVING DESIGN.

The i80 Scanner fits easily on any desk. Its quiet and ergonomic operation makes it ideal for busy office environments everywhere.

BUNDLED EXTRAS.

The new scanner includes TWAIN and ISIS drivers, as well as fantastic applications like KODAK Capture Software, Lite, TEXTBRIDGE OCR Software, and PAPERPORT LE Software.

INCREASE THE QUALITY OF YOUR PAPER-BASED WORK PROCESSES TODAY.

The new KODAK i80 Scanner can help you to save costs in administration, improve service quality with faster access to documents, make work flow more efficient, and give you greater management control.

Depend on KODAK Service & Support to keep all your equipment operating at maximum efficiency.

*Features enabled with KODAK Capture Software



As an ENERGY STAR® Partner, Eastman Kodak Company has determined that these products meet ENERGY STAR® guidelines for energy efficiency.

iNnovation you can count on™

FEATURES/BENEFITS

Enables document scanning applications for: DMS, OCR, archiving, forms reading, Web publishing and others.

Decentralised scanning: in a networked environment.

Personal scanning: in stand-alone systems.

Fast: Get your scanning done quickly with the automatic document feeder.

Reliable paper transport: Smooth, easy paper path.

Flatbed scanning: Excellent for handling books and magazines.

Colour, black & white or grayscale: Get the image types you need.

Easy installation: Simplified drivers and bundled software applications.

Quiet operation and small footprint: Fits comfortably into office environment.

User-replaceable wear parts: Stay up and running with snap-in parts.

Basic image processing:

- Photo/text
- Brightness/contrast controls
- Edge sharpening
- Noise reduction
- Descreening
- Gamma correction
- Error diffusion
- Hue, intensity, saturation controls

Preview mode: Eliminate guesswork. Allows immediate display of on-screen results of scanner controls. Settings may then be saved and applied to a batch of documents.

Flexible colour drop out: Improve OCR and text recognition by eliminating unwanted boxes and lines on your forms. Many colours can be "dropped out" by adjusting the red, green or blue channels via software.

Deskew*: Aligns scanned images according to the paper orientation for better readability.

Cropping*: Small or mixed image sizes are cut to actual dimensions, optimising file size.



specifications

Scanner type	Duplex ADF-Scanner with Flatbed
Image sensor / light source	Dual CCD (Charge Coupled Device) / White Lamp
Optical resolution	600 dpi
Output resolution	50 dpi up to 1,200 dpi in 1 dpi steps
Image format output	Bitonal (1 bit), Grey (8 bit), Colour (24 bit)
Scanning speed bitonal	35 ppm Simplex / 70 ipm Duplex (200 dpi, A4)
Scanning speed colour	20 ppm Simplex / 20 ipm Duplex (150 dpi, A4)
Document size ADF	94 mm x 140 mm (A6) to 215 mm x 355.6 mm (A4 over length)
Document size FB	Less than 25 mm x 25 mm to 215 mm x 297 mm (A4)
ADF capacity	75 Sheets at 60 g paper
Paper thickness	0.05 mm – 0.15 mm
Image processing	Dropout colour, Error diffusion, 4 halftone patterns
Interface SCSI-2	DB25 (25-pin) or LD50 (50-pin) connector
Power consumption	100-240V / 50-60 Hz / Running 36W / Standby 8W
Operating environment	Temperature 5-35 °C / Humidity 20% - 80% RH
Acoustical noise	Standby less than 46 dB / Operating less than 58 dB
Dimension (H,W,D)	199 mm x 567 mm (833 mm with output tray) x 350 mm
Weight	7.55 kg
Scanning volume	Recommended up to 1,500 pages per day
Software bundle	TWAIN and ISIS drivers, KODAK Capture Software, Lite (Document capture with deskew and cropping, scan to PDF and TIFF), PAPERPORT LE Software by ScanSoft (DMS, e-mail, distributed printing/copying), TEXTBRIDGE OCR Software by ScanSoft, ROXIO PHOTOSUITE Software (photo management)
Recommended minimum PC configuration	1.0 GHz processor with 12B MB RAM
Approvals and product certifications	UL/C-UL, TUV/R/GS, CE, C-Tick, VCCI-Class B, BSMI, FCC-Class B, EN 55022 Class B, EN 55024, EN 61000-3-2 Powerline Harmonics, EN 61000-3-3 Flicker
Scanner supplies	Feed module (4 included in the box)

Specifications are subject to change without notice.

CONTACT INFORMATION

United Kingdom, Phone: +44 1 442 845213, Fax: +44 1 442 845856

Scandinavia, Phone: +44 1 442 845878, Fax: +44 1 442 845856

Germany, Austria, & Switzerland, Phone: +49 711 406 3411, Fax: +49 711 406 3619

Eastern Europe, Middle East and Africa, Phone: +36 1 3879117 (Ext. 131), Fax: +36 1 3879113

France, Spain, Portugal, Phone: +33 1 4001 4082, Fax: +33 1 4001 3981

Italy, Phone: +39 0266028338, Fax: +39 0266028358

The Netherlands, Phone: +31 347 363 612, Fax: +31 347 363 606

Belgium and Luxembourg, Phone: +32 262 68506, Fax: +32 262 68502

www.kodak.com/go/docimaging

We're here for you.
Kodak Service & Support

COMMERCIAL
IMAGING

